

# DURSTONE

2016 COLLECTIONS



CONTEMPORARY STONE

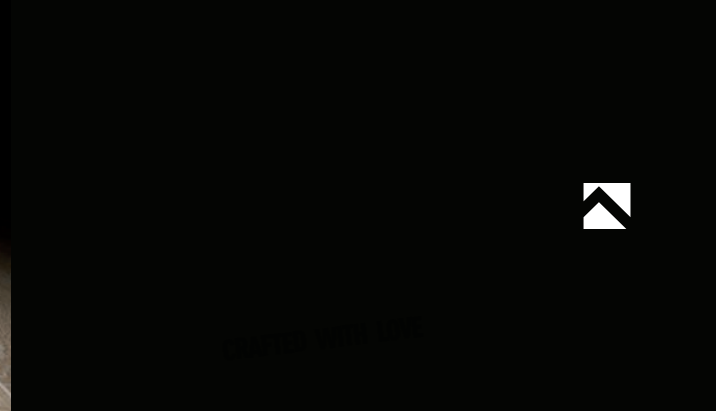


- 04 VILLA IBIZA
- 12 ALPINO
- 18 METRO

NATURE LINE



- 20 L'HERITAGE
- 24 OXFORD



2016 COLLECTIONS



DESCRIPCIÓN SIMBOLOGIA DE PRODUCTO /  
 PRODUCT SYMBOLOGY DESCRIPTION



MULTIUSO  
 MULTI-USE



PAVIMENTO  
 FLOOR TILES



REVESTIMIENTO  
 WALL TILES



PORCELÁNICO  
 PORCELAIN



PASTA BLANCA  
 WHITE BODY



MATE  
 MATT



LAPATTO  
 LAPATTO



PULIDO  
 POLISHED



BRILLO  
 GLOSSY



ANTIDESLIZANTE  
 ANTISLIP



RECTIFICADO&BISELADO  
 RECTIFIED&BEVELED



ESPESOR  
 THICKNESS



JUNTA MÍNIMA  
 MINIMUM JOINT



DESTONIFICADO SUAVE  
 LIGHT SHADE VARIATION



DESTONIFICADO MEDIO  
 MEDIUM SHADE VARIATION



DESTONIFICADO ALTO  
 HIGH SHADE VARIATION



TRABADO MÁX. 20%  
 BRICKBOND MAX. 20%



UPEC  
 UPEC



ANTIHIELO  
 FROST RESISTANCE



# DURSTONE

## RECOMENDACIONES DE USO PARA NUESTROS PRODUCTOS / RECOMMENDATIONS FOR THE USE OF OUR PRODUCTS

Estas recomendaciones se basan en la tipología del producto, así como en la intensidad de tráfico que van a soportar  
These recommendations are based on the type of product, as well as the volume of traffic that is to be supported.

- A** TRÁNSITO INTENSO. Apto para espacios con tráfico peatonal elevado. Halls, restaurantes, locales públicos, etc.  
INTENSE TRAFFIC. Suitable for high traffic pedestrian areas. Halls, restaurants, public spaces, etc.
- B** TRÁNSITO MEDIO. Apto para lugares de circulación habitual. Espacios comunes, cocinas, oficinas y viviendas.  
MEDIUM TRAFFIC. Suitable for usual traffic locations. Common areas, kitchens, offices and houses.
- C** TRÁNSITO LIGERO. Apto para estancias de ámbito doméstico. Baños, dormitorios, salones, etc.  
LIGHT TRAFFIC. Suitable for domestic rooms. Bathrooms, bedrooms, living rooms, etc.

## GRUPOS DE PRECIO / PRICE GROUPS

**DURXXXX**  
Venta por metro cuadrado  
Sold by square meter

**PESPXXXX**  
Venta por pieza  
Sold by piece

## DESCRIPCIÓN CARACTERÍSTICAS TÉCNICAS / TECHNICAL FEATURES DESCRIPTION



RESISTENCIA AL HIELO  
FROST RESISTANCE



ABSORCIÓN DE AGUA  
WATER ABSORPTION



RESISTENCIA A LAS MANCHAS  
STAIN RESISTANCE



RESISTENCIA A PRODUCTOS DE LIMPIEZA  
HOUSEHOLD PRODUCTS RESISTANCE



FLOOR · VILLA IBIZA WHITE 60x60 · DECOR FUSTA COAL 60x60

**VILLA IBIZA**

CONTEMPORARY STONE



60x60  
30x60

C3  
R11



VILLA IBIZA WHITE  
75x75

DUR1550

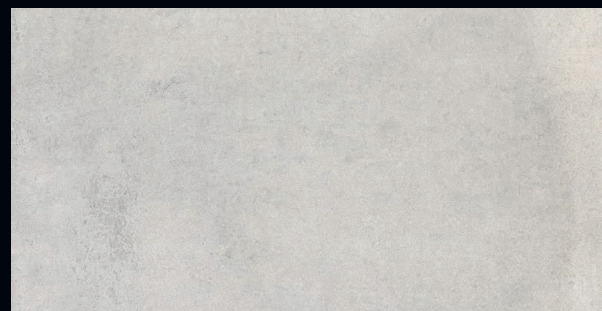


VILLA IBIZA WHITE  
60x60  
ANTISLIP

DUR900  
DUR1000



C3  
R11



VILLA IBIZA WHITE  
30x60  
ANTISLIP

DUR1400  
DUR1500

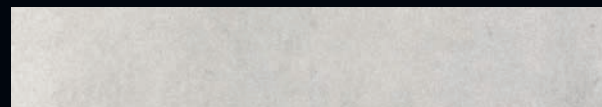


C3  
R11



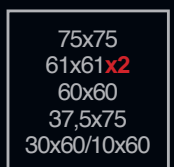
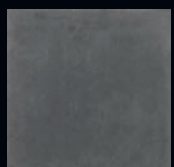
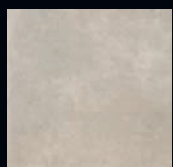
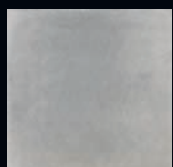
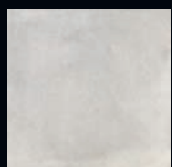
VILLA IBIZA WHITE  
37,5x75

DUR1650



VILLA IBIZA WHITE  
10x60

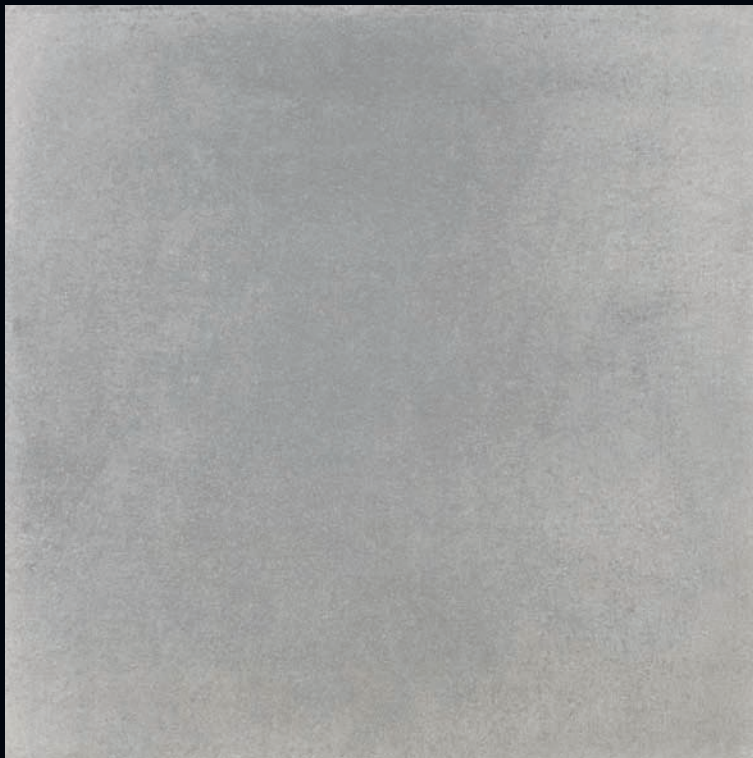
DUR2900



75x75  
61x61x2  
60x60  
37,5x75  
30x60/10x60



NATURAL  
ANTISLIP



VILLA IBIZA GREY  
75x75

DUR1550



VILLA IBIZA GREY  
60x60  
ANTISLIP

DUR900  
DUR1000



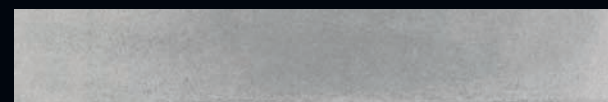
VILLA IBIZA GREY  
37,5x75

DUR1650



VILLA IBIZA GREY  
30x60  
ANTISLIP

DUR1400  
DUR1500



VILLA IBIZA GREY  
10x60

DUR2900





60x60  
30x60

C3  
R11



VILLA IBIZA EARTH  
75x75

DUR1550



VILLA IBIZA EARTH  
60x60  
ANTISLIP

DUR900  
DUR1000



C3  
R11



VILLA IBIZA EARTH  
30x60  
ANTISLIP

DUR1400  
DUR1500

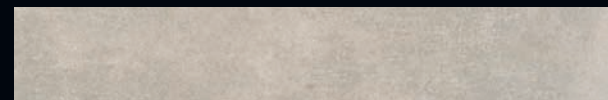


C3  
R11



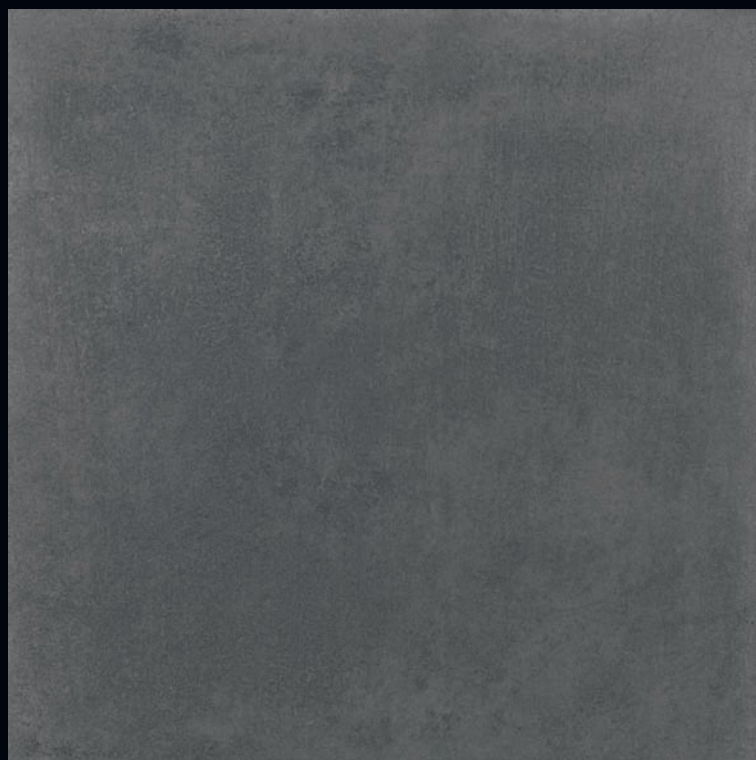
VILLA IBIZA EARTH  
37,5x75

DUR1650



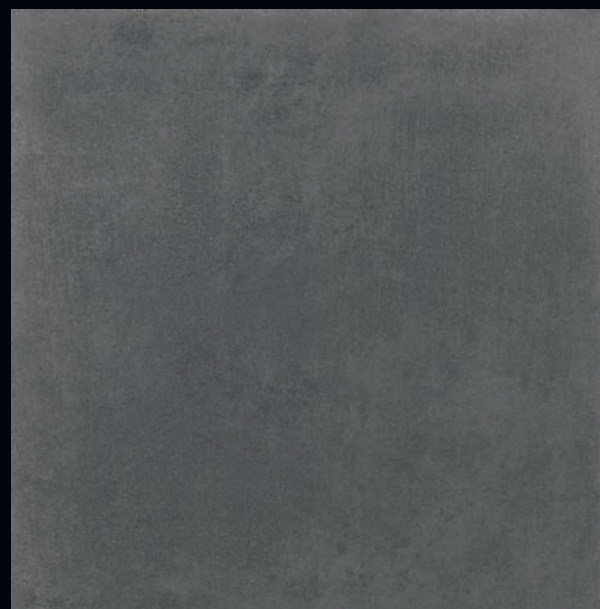
VILLA IBIZA EARTH  
10x60

DUR2900



VILLA IBIZA BLACK  
75x75

DUR1550



VILLA IBIZA BLACK  
60x60  
ANTISLIP

DUR900  
DUR1000



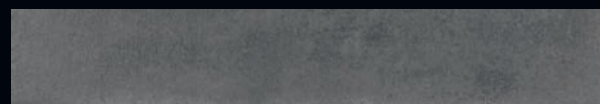
VILLA IBIZA BLACK  
30x60  
ANTISLIP

DUR1400  
DUR1500



VILLA IBIZA BLACK  
37,5x75

DUR1650



VILLA IBIZA BLACK  
10x60

DUR2900

### RECOMENDACIÓN DE USO / RECOMMENDED USE



11050 N  
ISO 10545/4



RESISTE  
ISO 10545/12



INF 0.5%  
ISO 10545/3



5  
ISO 10545/14



UA  
ISO 10545/13

### CARACTERÍSTICAS TÉCNICAS / TECHNICAL FEATURES



C3  
R11

60x60  
30x60



DECOR FUSTA COAL  
60x60

DUR1300



MOSAICO IBIZA WHITE  
30x30 PESP500



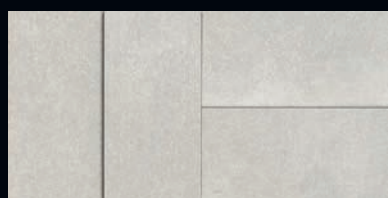
MOSAICO IBIZA GREY  
30x30 PESP500



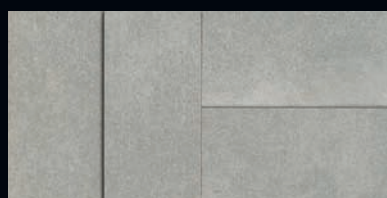
MOSAICO IBIZA EARTH  
30x30 PESP500



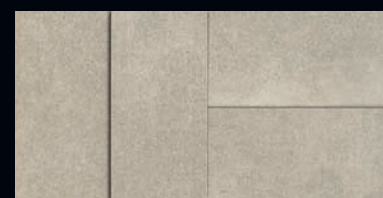
MOSAICO IBIZA BLACK  
30x30 PESP500



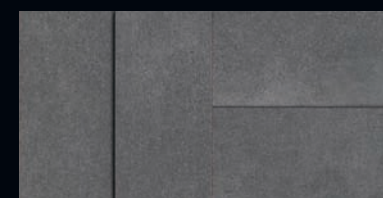
MODUL IBIZA WHITE  
19x38 PESP1400



MODUL IBIZA GREY  
19x38 PESP1400



MODUL IBIZA EARTH  
19x38 PESP1400



MODUL IBIZA BLACK  
19x38 PESP1400

**LISTA EMBALAJE BASES / BASES PACKING LIST**

MEDIDA SIZE	PIEZAS/CAJA PIECES/BOX	KG/CAJA KG/BOX	M2/CAJA M2/BOX	CAJA/PALET BOX/PALLET	M2//PALET M2/PALLET	KG/PALET KG/PALLET
9,5x59	16	19	0,96	56	53,76	1.084
29,5x59	6	23,8	1,04	40	41,60	967
37,5x75	4	25,92	1,13	48	54,24	1.258
59x59	3	23,8	1,04	40	41,60	967
75x75	2	25,92	1,12	42	47,25	1.104

**LISTA EMBALAJE DECORADOS / DECORS PACKING LIST**

PIEZA PIECE	PIEZAS/CAJA PIECES/BOX	KG/CAJA KG/BOX
MOSAICO IBIZA 30x30	11	23
MODUL IBIZA 19X38	9	16,5



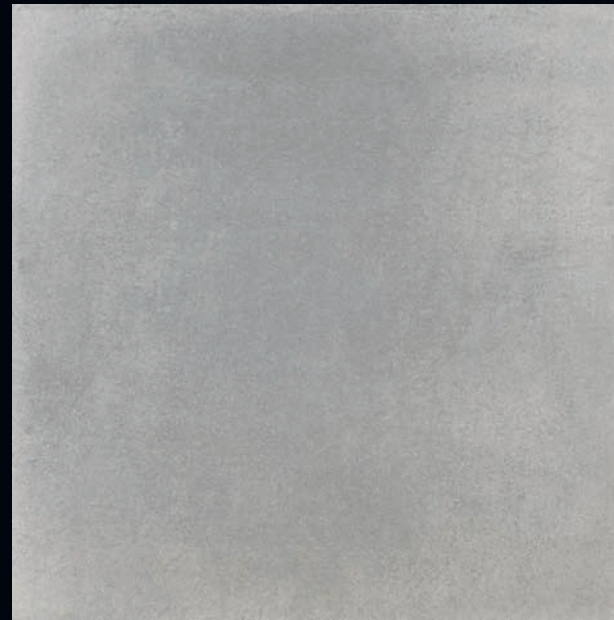
FLOOR · VILLA IBIZA BLACK 61x61x2

**VILLA IBIZA**x2

CONTEMPORARY STONE



C3  
R11



VILLA IBIZA GREY  
61x61x2

DUR3900



VILLA IBIZA EARTH  
61x61x2

DUR3900



VILLA IBIZA BLACK  
61x61x2

DUR3900

**LISTA EMBALAJE BASES / BASES PACKING LIST**

MEDIDA SIZE	PIEZAS/CAJA PIECES/BOX	KG/CAJA KG/BOX	M2/CAJA M2/BOX	CAJA/PALET BOX/PALLET	M2/PALET M2/PALLET	KG/PALET KG/PALLET
61x61x2	2	34	0,732	30	21,96	1.036

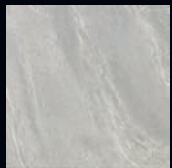


**ALPINO**

CONTEMPORARY STONE



FLOOR · ALPINO HIELO 60X60 / WALL · ALPINO HIELO 30X60 – MOSAICO MURO ALPINO HIELO 30X30



60x60  
30x60

NATURAL  
ANTISLIP



ALPINO HIELO  
60x60

DUR400



ALPINO HIELO ANTISLIP  
60x60

DUR850



ALPINO HIELO  
30x60

DUR700



MOSAICO ALPINO HIELO  
30x30 PESP500



MOSAICO MURO ALPINO HIELO  
30x30 PESP800





ALPINO MARFIL  
60x60

DUR400



ALPINO MARFIL ANTISLIP  
60x60

DUR850



C3  
R11



ALPINO MARFIL  
30x60

DUR700



MOSAICO ALPINO MARFIL  
30x30 PESP500



MOSAICO MURO ALPINO MARFIL  
30x30 PESP800

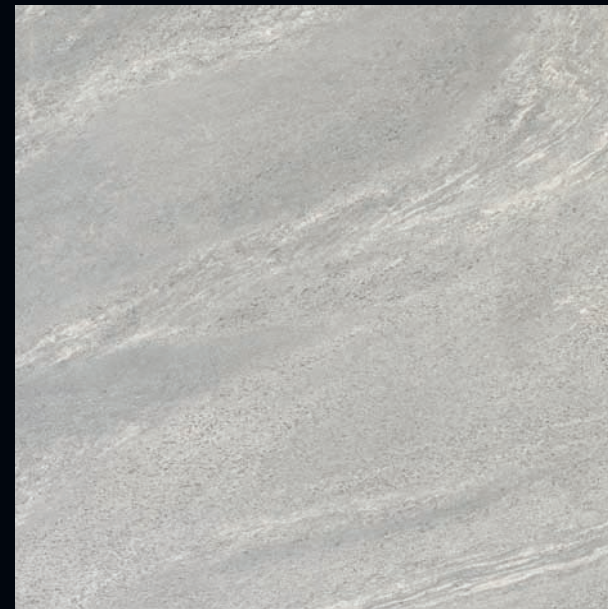


C3  
R11



ALPINO GRIS  
60x60

DUR400



ALPINO GRIS ANTISLIP  
60x60

DUR850



C3  
R11



ALPINO GRIS  
30x60

DUR700



MOSAICO ALPINO GRIS  
30x30 PESP500



MOSAICO MURO ALPINO GRIS  
30x30 PESP800

RECOMENDACIÓN DE USO / RECOMMENDED USE

CARACTERÍSTICAS TÉCNICAS / TECHNICAL FEATURES



11050 N  
ISO 10545/4

RESISTE  
ISO 10545/12

INF. 0,5%  
ISO 10545/3

5  
ISO 10545/14

UA  
ISO 10545/13

# ALPINO



**LISTA EMBALAJE BASES / BASES PACKING LIST**

MEDIDA SIZE	PIEZAS/CAJA PIECES/BOX	KG/CAJA KG/BOX	M2/CAJA M2/BOX	CAJA/PALET BOX/PALLET	M2/PALET M2/PALLET	KG/PALET KG/PALLET	PIEZA PIECE	PIEZAS/CAJA PIECES/BOX	KG/CAJA KG/BOX
59x59	3	23,8	1,04	40	41,60	967	MOSAICO ALPINO 30x30	11	21
29,5x59	6	23,8	1,04	40	41,60	967	MOSAICO MURO ALPINO 30x30	6	11,5

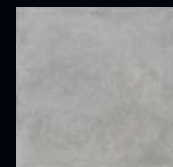
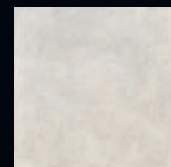
FLOOR · ALPINO GRIS 60X60 – ALPINO GRIS ANTISLIP 60X60



FLOOR · METRO GRIS 60X60 – METRO GRIS ANTISLIP 60X60

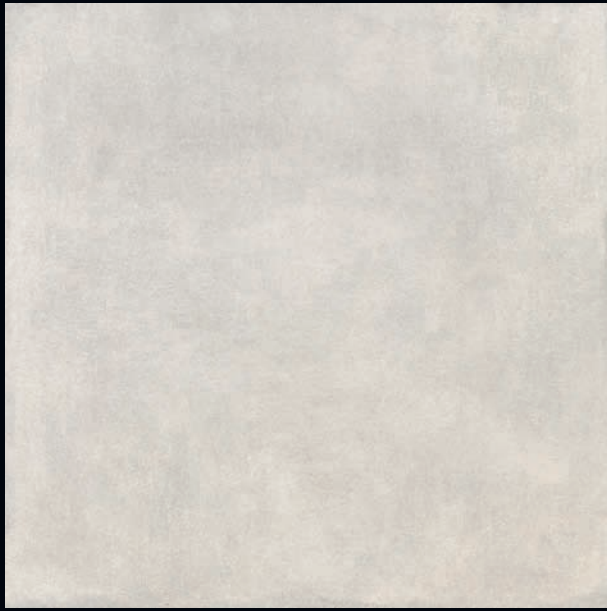
**METRO**

CONTEMPORARY STONE





C3  
R11



METRO BLANCO  
60x60  
ANTISLIP

DUR400  
DUR850



C3  
R11



MOSAICO METRO BLANCO  
30x30 PESP500



METRO GRIS  
60x60  
ANTISLIP

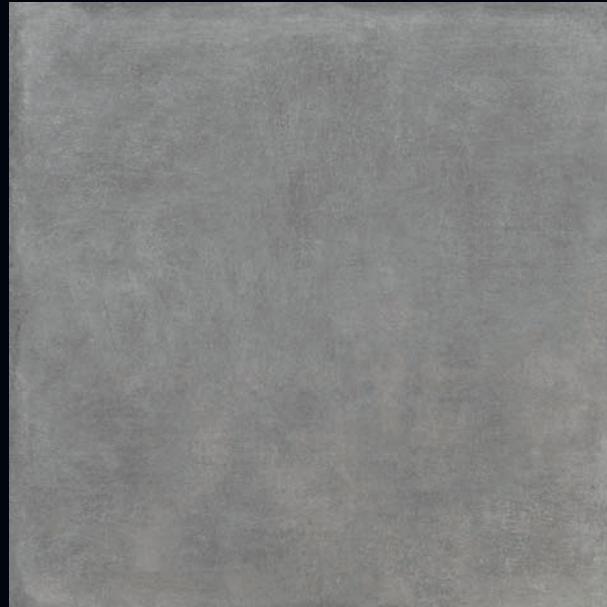
DUR400  
DUR850



C3  
R11



MOSAICO METRO GRIS  
30x30 PESP500



METRO GRAFITO  
60x60  
ANTISLIP

DUR400  
DUR850



C3  
R11



MOSAICO METRO GRAFITO  
30x30 PESP500

**LISTA EMBALAJE BASES / BASES PACKING LIST**

MEDIDA SIZE	PIEZAS/CAJA PIECES/BOX	KG/CAJA KG/BOX	M2/CAJA M2/BOX	CAJA/PALET BOX/PALLET	M2/PALET M2/PALLET	KG/PALET KG/PALLET
59x59	3	23,8	1,04	40	41,60	967

**LISTA EMBALAJE DECORADOS / DECORS PACKING LIST**

PIEZA PIECE	PIEZAS/CAJA PIECES/BOX	KG/CAJA KG/BOX
MOSAICO METRO 30x30	11	23



FLOOR · L'HERITAGE MAPLE 30x120 · CHEVRONS AUTOMNE 60x120 · RUBAN TEAK 30x30

**L'HERITAGE**

NATURE LINE



C3  
R11



L'HERITAGE MAPLE  
30x120  
ANTISLIP

DUR1600  
DUR1900



C3  
R11



L'HERITAGE TEAK  
30x120  
ANTISLIP

DUR1600  
DUR1900

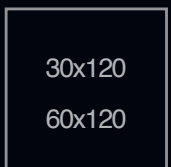
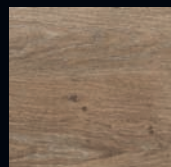
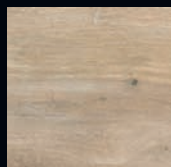
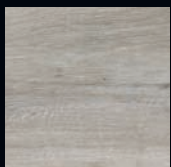
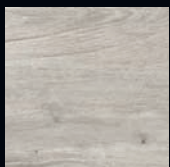


C3  
R11



CHEVRONS AUTOMNE  
60x120

DUR1600



30x120  
60x120

NATURAL  
ANTISLIP



L'HERITAGE POPLAR  
30x120  
ANTISLIP

DUR1600

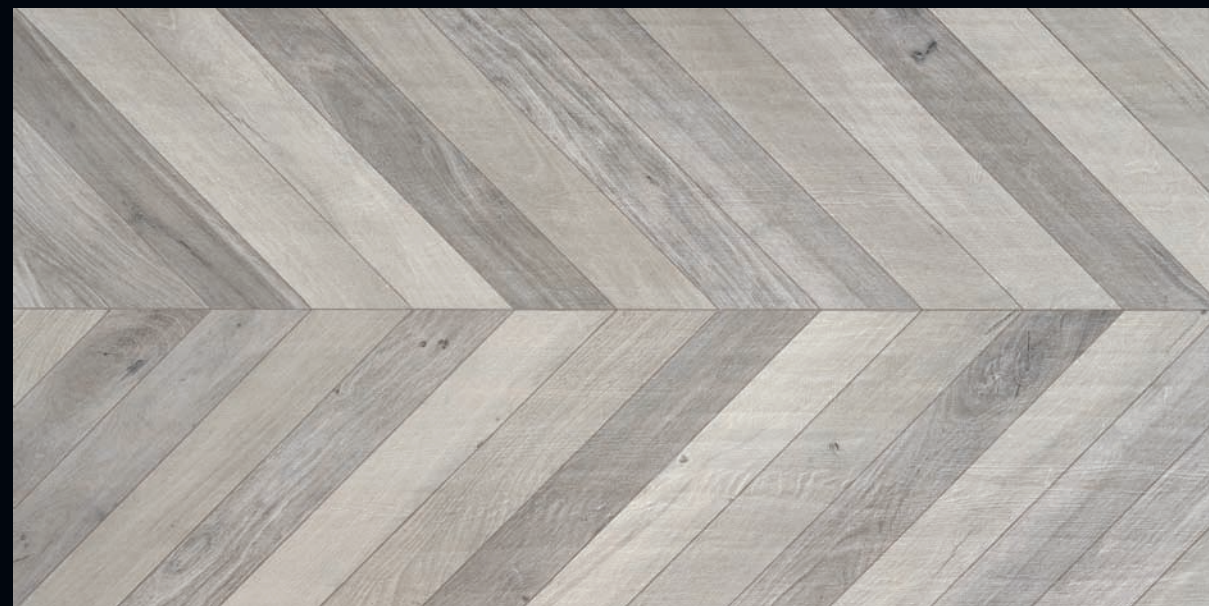
DUR1900



L'HERITAGE ASH  
30x120  
ANTISLIP

DUR1600

DUR1900



CHEVRONS PRINTEMS  
60x120

DUR1600

### RECOMENDACIÓN DE USO / RECOMMENDED USE



### CARACTERÍSTICAS TÉCNICAS / TECHNICAL FEATURES



RESISTE  
ISO 10545/12



INF. 0,5%  
ISO 10545/3



5  
ISO 10545/14



UA  
ISO 10545/13





C3  
R11



RUBAN POPLAR  
30x60

PESP3300



RUBAN ASH  
30x60

PESP3300



RUBAN MAPLE  
30x60

PESP3300



RUBAN TEAK  
30x60

PESP3300

**LISTA EMBALAJE BASES / BASES PACKING LIST**

MEDIDA SIZE	PIEZAS/CAJA PIECES/BOX	KG/CAJA KG/BOX	M2/CAJA M2/BOX	CAJA/PALET BOX/PALLET	M2/PALET M2/PALLET	KG/PALET KG/PALLET
30x120	4	39,14	1,44	30	43,20	1.174
60x120	2	39,14	1,44	27	38,88	1.057

**LISTA EMBALAJE DECORADOS / DECORS PACKING LIST**

PIEZA PIECE	PIEZAS/CAJA PIECES/BOX	KG/CAJA KG/BOX
RUBAN 30x60	9	14,2



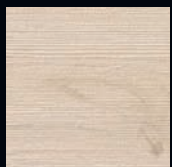
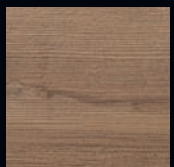
FLOOR · OXFORD CENIZA 20X114 – OXFORD CENIZA ANTISLIP 20X114

**OXFORD**

NATURE LINE

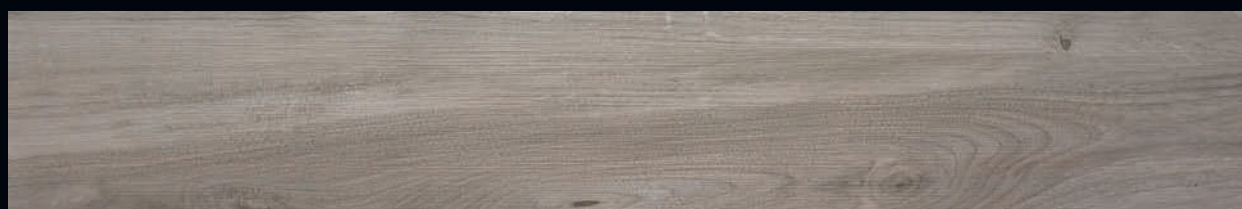


FLOOR · OXFORD TECA 20x114



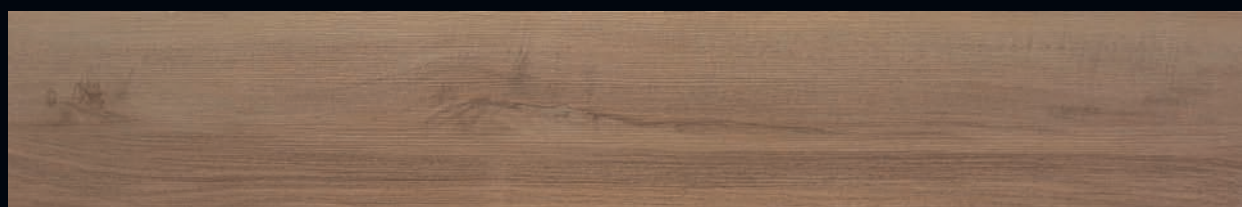
20x114

NATURAL  
ANTISLIP



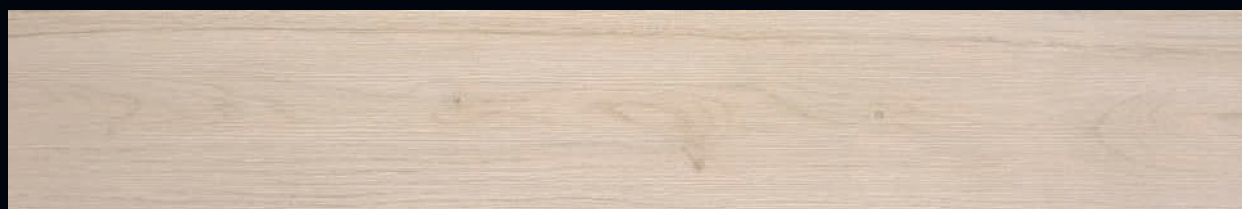
OXFORD CENIZA  
20x114

DUR600



OXFORD TECA  
20x114

DUR600



OXFORD ROBLE  
20x114

DUR600

RECOMENDACIÓN DE USO / RECOMMENDED USE



CARACTERÍSTICAS TÉCNICAS / TECHNICAL FEATURES



RESISTE  
ISO 10545/12



INF. 0,5%  
ISO 10545/3



5  
ISO 10545/14




UA  
ISO 10545/13



C3  
R11




OXFORD CENIZA ANTISLIP  
20x114

DUR850   
C3  
R11




OXFORD TECA ANTISLIP  
20x114

DUR850   
C3  
R11



OXFORD ROBLE ANTISLIP  
20x114

DUR850   
C3  
R11

**LISTA EMBALAJE BASES / BASES PACKING LIST**

MEDIDA SIZE	PIEZAS/CAJA PIECES/BOX	KG/CAJA KG/BOX	M2/CAJA M2/BOX	CAJA/PALET BOX/PALLET	M2/PALET M2/PALLET	KG/PALET KG/PALLET
20x114	5	29,5	1,14	36	41,04	1082



Este catálogo anula los anteriores. Los tonos y colores de las fotografías son una referencia a los modelos reales. CASA DEPOT SL (DURSTONE) no asume ninguna responsabilidad por errores de impresión en cualquier dato reflejado en el presente catálogo. Para la realización de cualquier pedido confirme los datos con CASA DEPOT SL (DURSTONE).

Todas las características y especificaciones técnicas están basadas en la información disponible en el momento de impresión del catálogo. CASA DEPOT SL (DURSTONE) se reserva el derecho de modificar, de acuerdo a las circunstancias de mercado y sin previo aviso, cualquier modelo, característica o prestaciones de sus productos sin que se contraiga derecho o perjuicio alguno.

This catalogue cancels the previous ones. Colors and tonalities of the pictures shown in this catalogue are a reference of the real models. CASA DEPOT SL (DURSTONE) does not take any responsibility of printing mistakes in any data of this catalogue. Check and confirm the data with CASA DEPOT SL (DURSTONE) before any order.

All technical characteristics and specifications are based on the available information at the printing moment. CASA DEPOT SL (DURSTONE) reserves the right to modify, according to changes in markets, and without any prior advice any model, characteristics or other information of its products without any responsibility or any commitment.

#### **ADMINISTRACIÓN - ADMINISTRATION**

CASA DEPOT SL  
CIF: B-97471098  
Plaza Ayuntamiento, 19 – 9º G  
(Apdo. Correos 347)  
46002 (Valencia)  
TLF: 96 351 11 49

#### **VENTAS Y LOGÍSTICA – SALES & LOGISTICS**

DURSTONE  
CV 20, AV / Mediterraneo, 52  
(Apdo. Correos 419)  
12200 - Onda (Castellón)  
TLF: 964 62 61 34  
FAX: 964 62 61 35



[www.durstone.es](http://www.durstone.es)

